



PROJECT STUDY

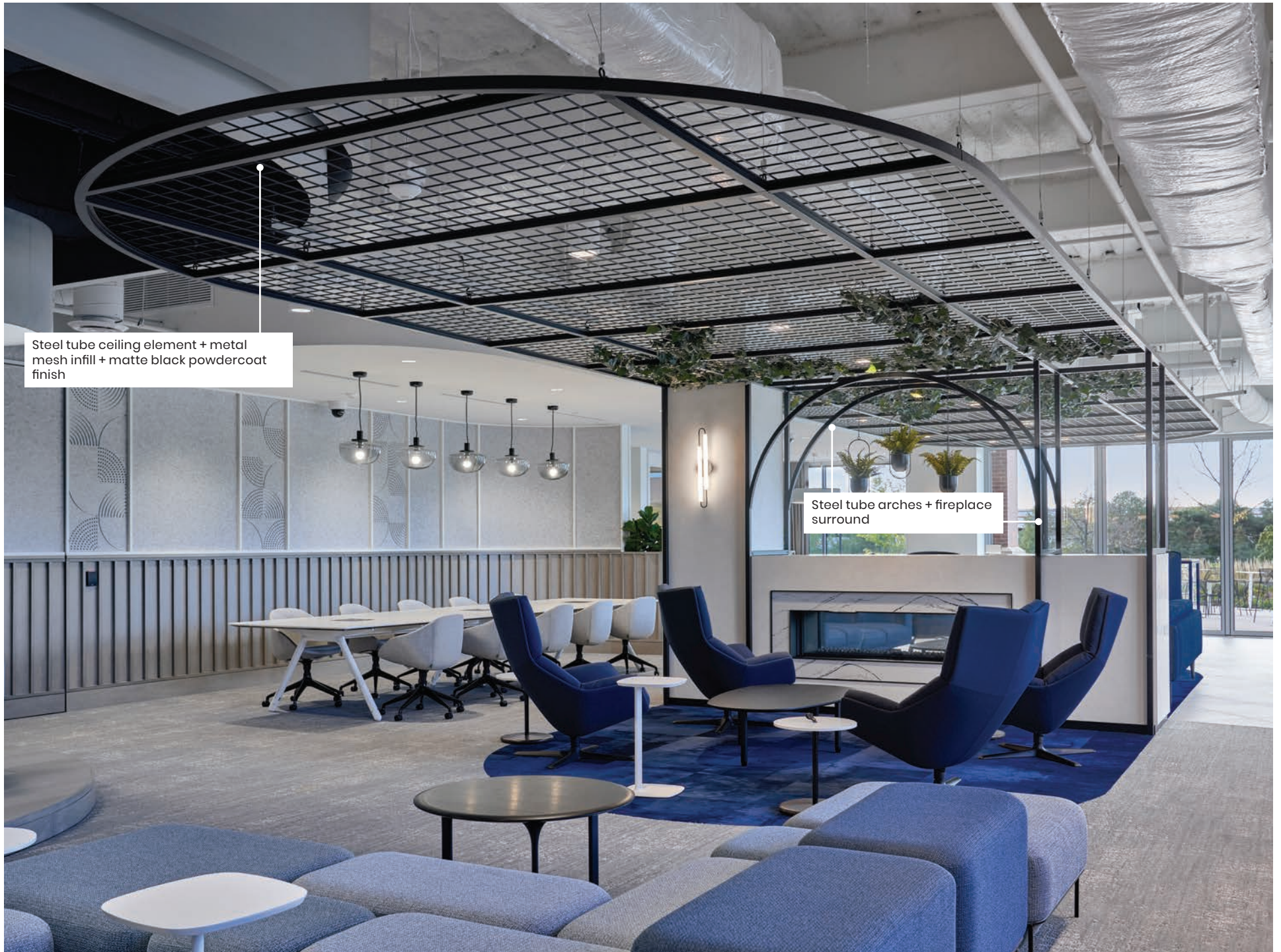
BCU

Steel ceiling elements are a high-impact yet affordable way to mask exposed ducts, conduits, pipes and other unattractive ceiling objects. At BCU, we worked with Partners by Design to fabricate two key architectural elements for the amenity spaces.

- Five weeks from approved drawings to first delivery, 3 week install window with staggered deliveries
- Nearly 900 SF of mesh ceiling
- Assembled sections exceeding 25' in length

Design: Partners by Design
Millwork Partner: Huber Cabinet Works
Photography: Ross Floyd
Spring 2021, Chicagoland





Steel tube ceiling element + metal mesh infill + matte black powdercoat finish

Steel tube arches + fireplace surround

BEHIND THE PROJECT

BCU

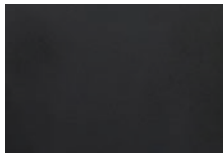
MATERIALS USED



1.5"x1.5" steel tube



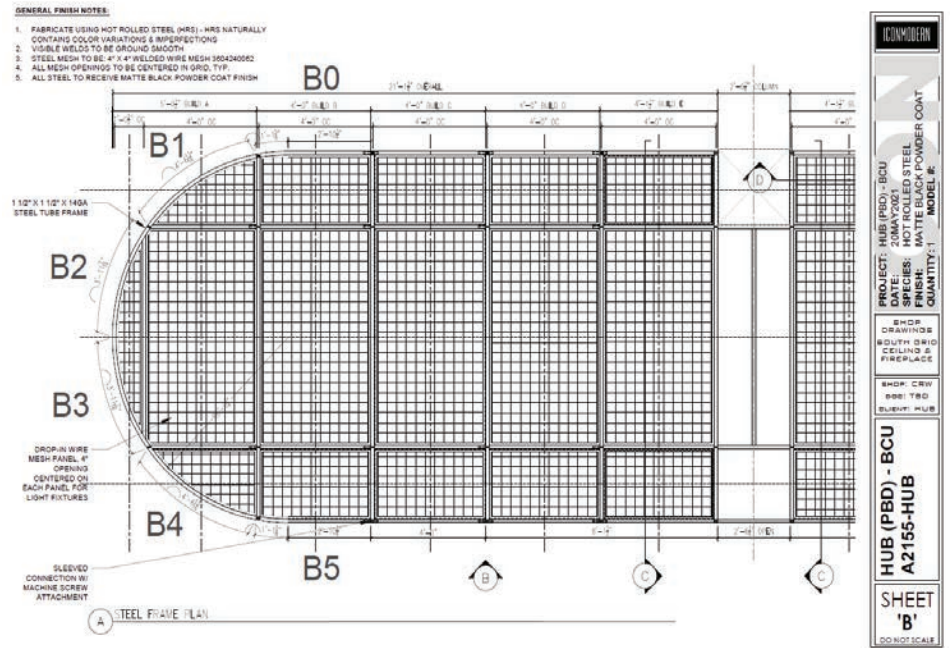
4"x4" steel mesh infill



Matte black powdercoat



PBD Design Intent

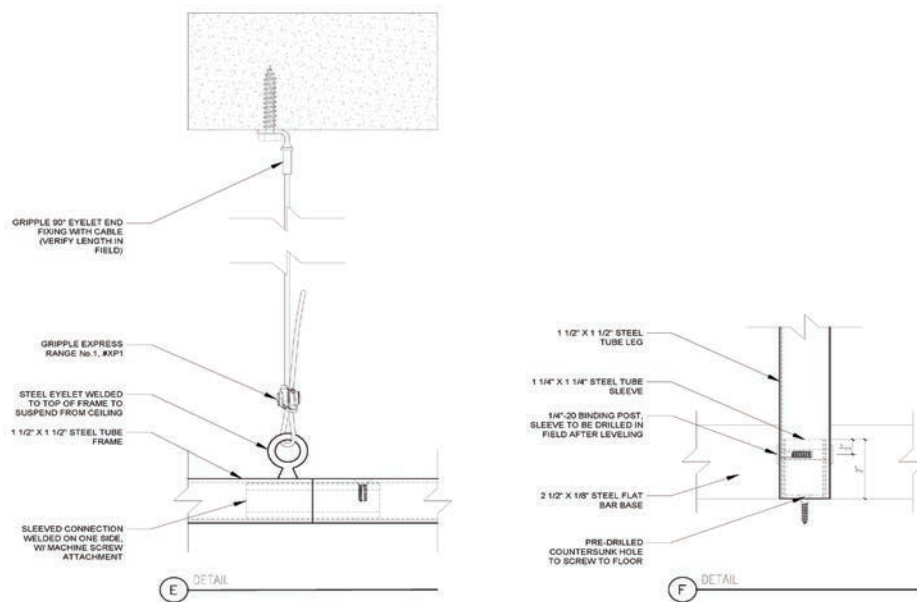


Shop drawings of steel mesh ceiling element

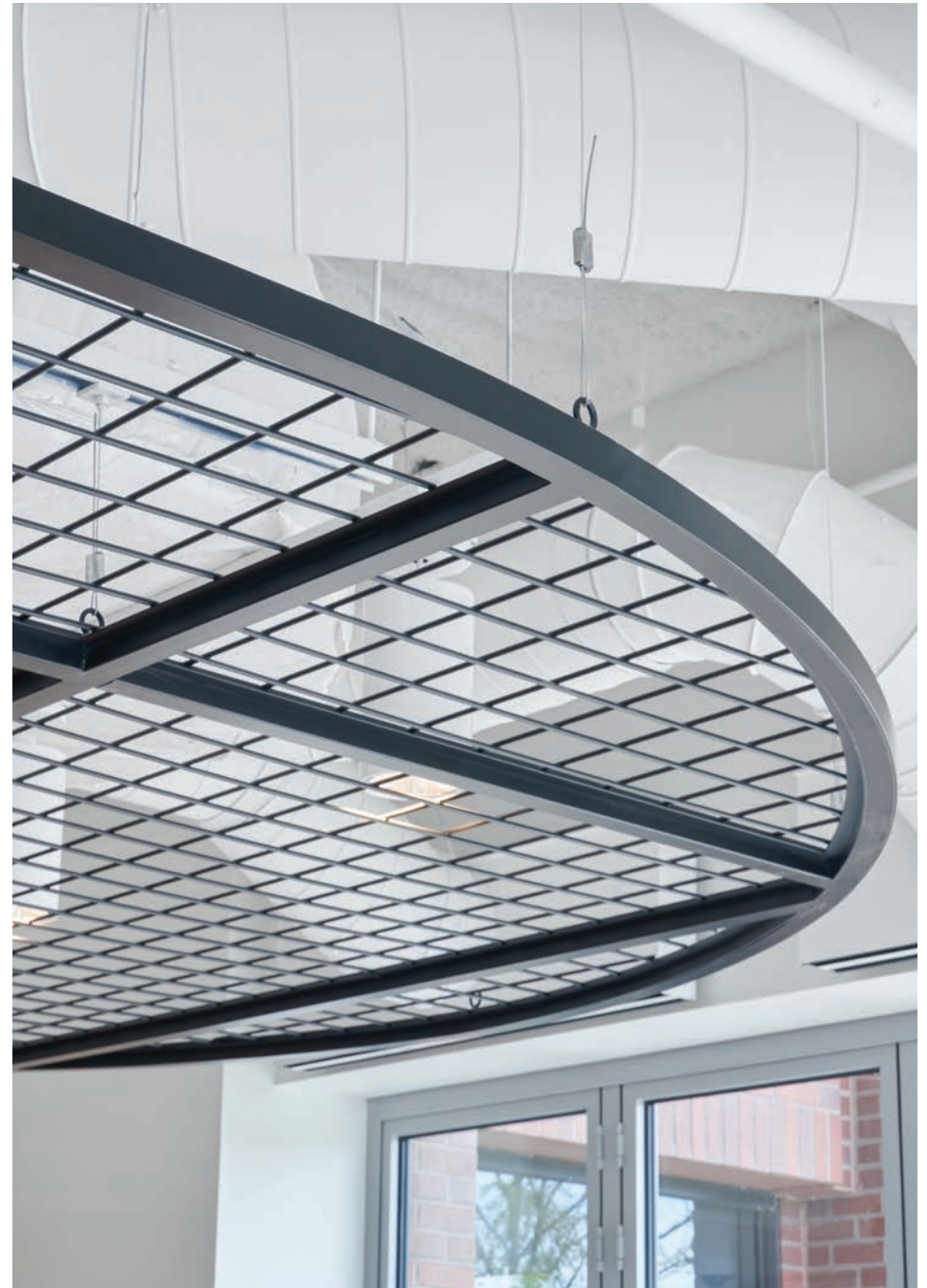
BEHIND THE PROJECT

BCU

- System supported by airline cable to deck in order to appear floating
- Removable drop-in mesh panels up to 4' x 8' in size
- Sleeved connections connect steel tube frame with concealed black oxide fasteners



Shop Drawing Details



Installed detail shot of ceiling system