

MILLSTONE TABLE



SPEC INFORMATION

- Wood species are available with or without outdoor oil based finish (rendering is shown in ipe)
- Wood species are rot resistant and will grey over time if finish is not reapplied annually
- All pieces are designed for drainage
- Fabricated in Chicago, IL
- Base is made of fiber glass, resin and stone aggregate

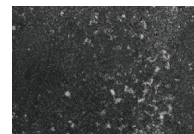
COMMON SIZES

- 20" Dia x 24"H (25lbs)
- 30" Dia x 16"H (35lbs)
- 36" Dia x 14"H (40lbs)
- 48" Dia x 18"H (80lbs)
- Custom available upon request

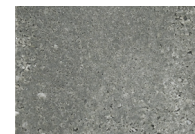
BASE FINISH OPTIONS



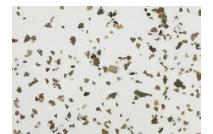
Aged Stone



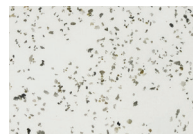
Coal Stone



Key Stone



Natural Stone



White Stone

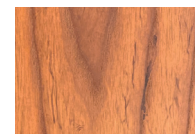
TOP SPECIES OPTIONS WITH OIL FINISH



Ipe

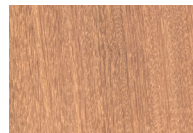


Cedar



Thermally Modified Ash

TOP SPECIES OPTIONS UNFINISHED



Ipe



Cedar



Thermally Modified Ash